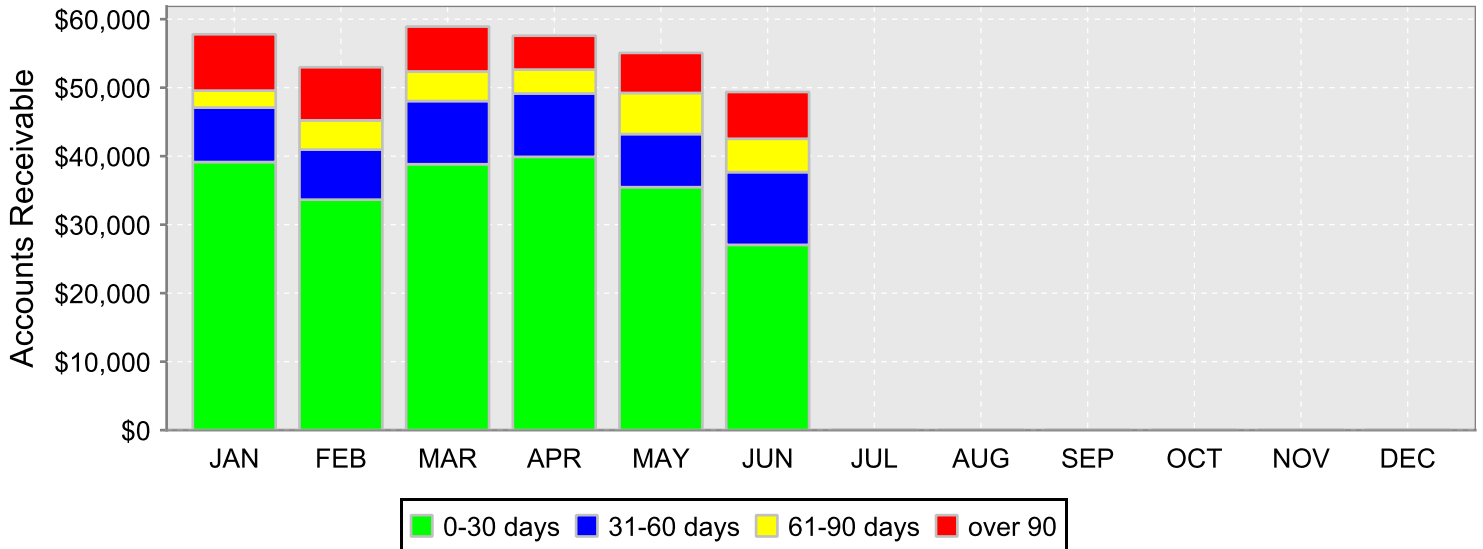


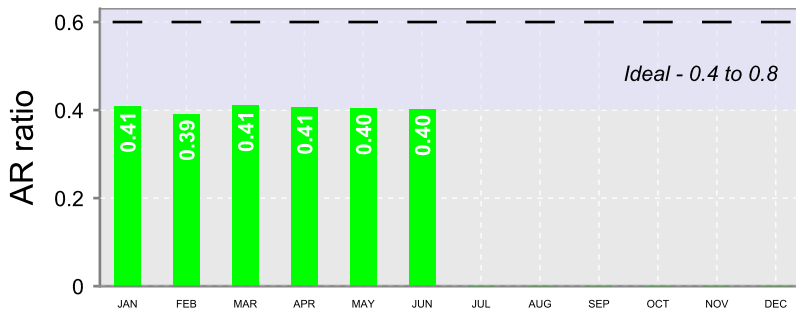
PRACTICE FINANCIALS

Accounts Receivable



Month	0-30 days	31-60 days	61-90 days	90+ days	% Overdue	Total
January	39,140	7,955	2,469	8,230	32%	57,794
February	33,648	7,305	4,274	7,755	36%	52,982
March	38,822	9,226	4,315	6,551	34%	58,914
April	39,901	9,254	3,482	4,947	31%	57,584
May	35,470	7,755	5,999	5,848	36%	55,072
June	27,047	10,620	4,869	6,832	45%	49,368
July	0	0	0	0	0%	0
August	0	0	0	0	0%	0
September	0	0	0	0	0%	0
October	0	0	0	0	0%	0
November	0	0	0	0	0%	0
December	0	0	0	0	0%	0
Average	35,671	8,686	4,235	6,694	35%	55,286

AR/Monthly Production Ratio



June % of AR by aging

