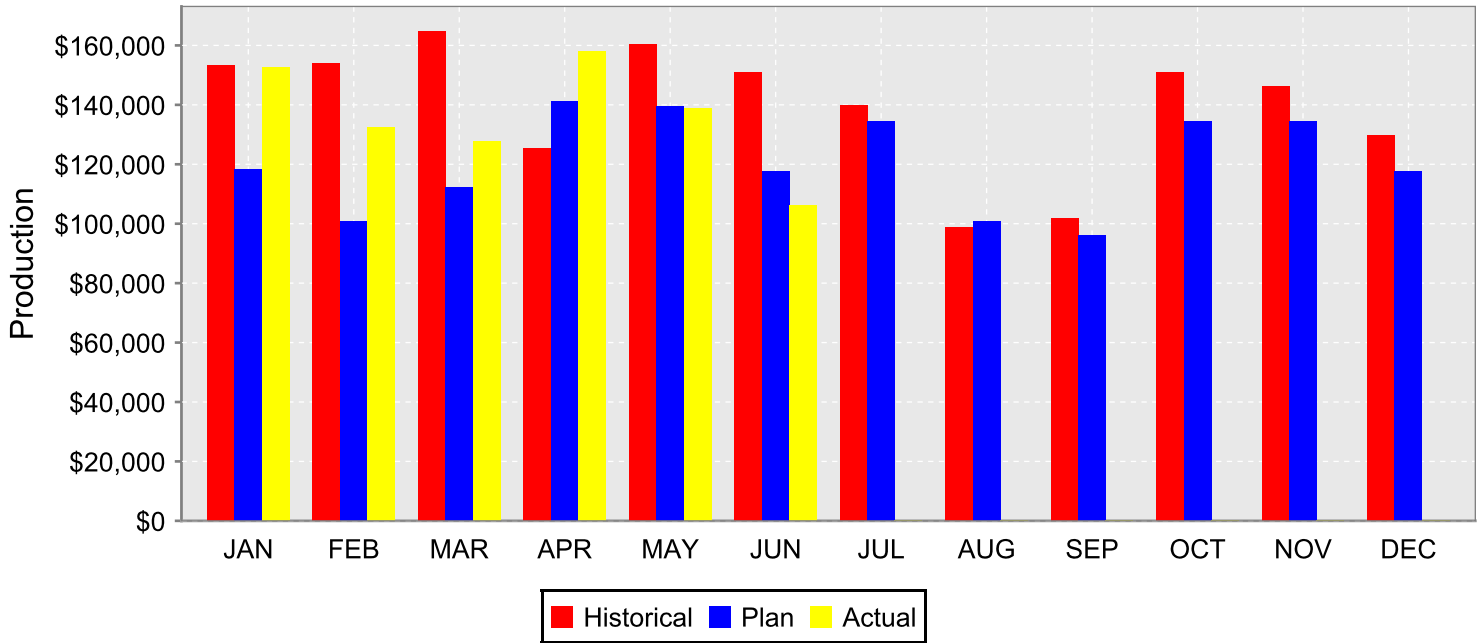


PRACTICE PRODUCTIVITY

Office Production



Month	Actual	Planned	\$ Difference	% Difference	Average Production/Day	Historical	\$ Difference	% Difference
January	152,493	118,150	34,343	29%	9,242	153,350	(857)	(1%)
February	132,414	100,800	31,614	31%	11,034	153,940	(21,526)	(14%)
March	127,883	112,200	15,683	14%	9,837	164,875	(36,992)	(22%)
April	158,032	141,350	16,682	12%	8,780	125,423	32,609	26%
May	138,858	139,550	(692)	(0%)	8,168	160,493	(21,635)	(13%)
June	106,267	117,600	(11,333)	(10%)	7,872	150,961	(44,694)	(30%)
July	0	0	0	0%	0	0	0	0%
August	0	0	0	0%	0	0	0	0%
September	0	0	0	0%	0	0	0	0%
October	0	0	0	0%	0	0	0	0%
November	0	0	0	0%	0	0	0	0%
December	0	0	0	0%	0	0	0	0%
YTD Totals	815,947	729,650	86,297	12%	-----	909,042	(93,095)	(10%)
YTD Average	135,991	121,608	14,383	12%	9,066	151,507	(15,516)	(10%)

Date of Last Record Production Month - March, 2008
 Amount of Last Record Production Month - \$164,875.00

Dental
 Date of Last Fee Increase - March, 2008
 Percent of Last Fee Increase - 4.00%

Hygiene
 Date of Last Fee Increase - March, 2008
 Percent of Last Fee Increase - 4.00%