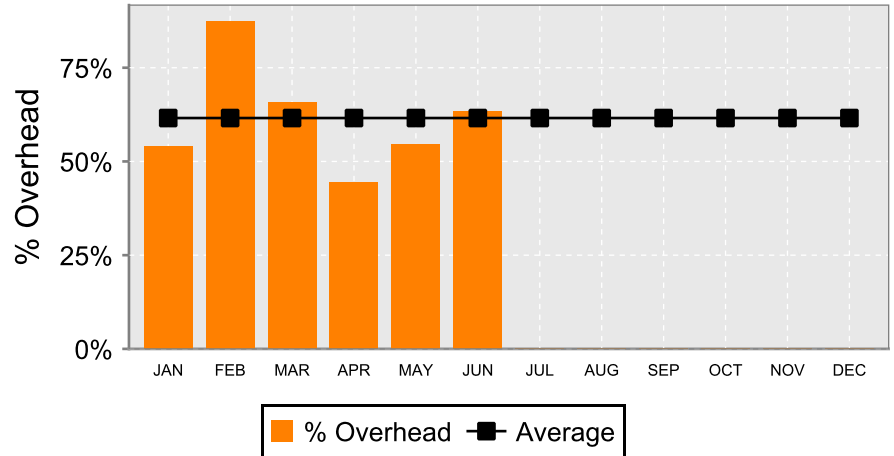


PRACTICE PROFITABILITY

Overhead

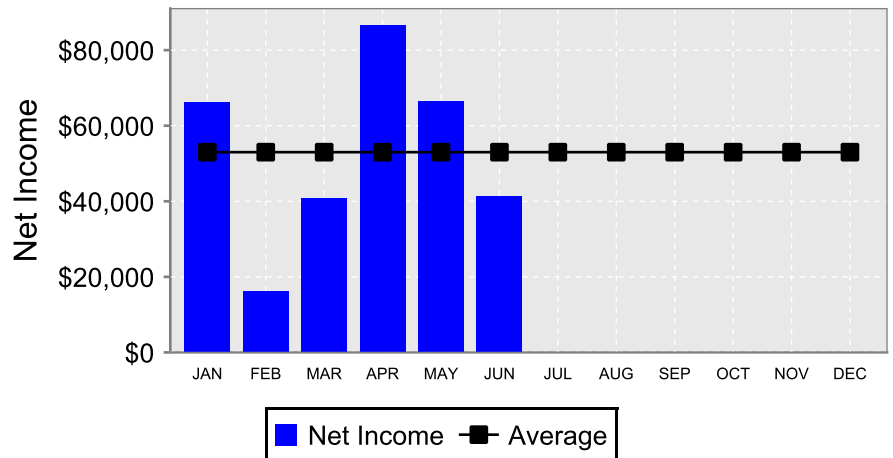
Practice Overhead

Month	% Month	% YTD
January	54.14%	54.14%
February	87.33%	69.69%
March	65.73%	68.49%
April	44.47%	61.64%
May	54.48%	60.13%
June	63.34%	60.58%
July	0.00%	0.00%
August	0.00%	0.00%
September	0.00%	0.00%
October	0.00%	0.00%
November	0.00%	0.00%
December	0.00%	0.00%
Averages	60.58%	60.58%



Practice Profitability

Month	Net Income
January	66,367
February	16,160
March	40,853
April	86,655
May	66,633
June	41,325
July	0
August	0
September	0
October	0
November	0
December	0
Total	317,993
Average	52,999



Production/Collections

